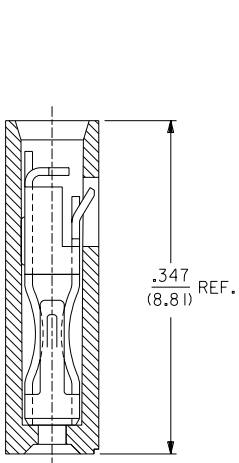
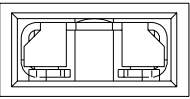
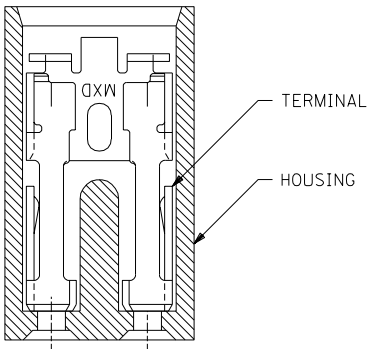
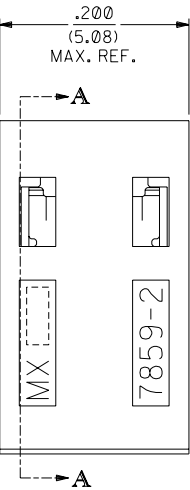


EDP NO.	ENG NO.	FINISH
15-38-1026	A-7859-2A164	TIN OVERALL
15-29-1025	A-7859-2A554	15 GOLD
15-29-1027	A-7859-2A561	30 GOLD

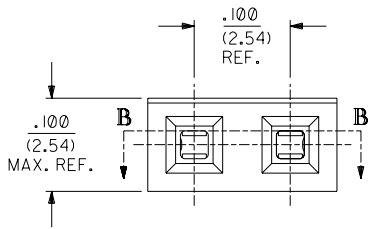


SECTION A-A



SECTION B-B

PART IDENTIFICATION:



NOTES:

- MATERIAL;
HOUSING: GLASS FILLED POLYESTER; 94V-0; COLOR: BLACK
TERMINAL: PHOSPHOR BRONZE ALLOY.
- THIS PRODUCT CONFORMS TO MOLEX PRODUCT SPEC. PS-7859.
- TO BE USED WITH .025/(0.64) SQUARE PINS.
- MINIMUM MATING PIN LENGTH: .200/(5.08)
MAXIMUM MATING PIN LENGTH: .270/(6.86)
- PRODUCT IS PACKAGED IN BOXES PER PK-70873-0815.

FINISH SPECIFICATION

- TIN OVERALL - .000150 MINIMUM TIN PLATE OVER
.000050 MINIMUM NICKEL UNDERPLATE.
- 15 GOLD - .000015 MINIMUM GOLD PLATE IN SELECT AREA OVER
.000050 MINIMUM NICKEL UNDERPLATE OVERALL.
- 30 GOLD - .000030 MINIMUM GOLD PLATE IN SELECT AREA OVER
.000050 MINIMUM NICKEL UNDERPLATE OVERALL.

NOTE FOR LEAD FREE CONVERSION:

THE PRIMARY SHIPPING CARTON WILL BE LABELED "COMPLIANT TO ROHS DIRECTIVE 2002/95/EC AND ELV ANNEX II OF DIRECTIVE 2000/53/EC". CARTONS WITHOUT THIS LABEL MAY CONTAIN PRODUCT WITH LEAD.

D	LEAD FREE CONV ECN UCP2004-2133 RKADAMS 04/04/27
CI	ADDED PKG SPEC. PER ECN U70786 WHETSTON 97/2/7
C	CHANGED MATERIAL PER ECR #U51214 95/06/02 CAC
B	REVISED ENG. NOS. PER ECR # U31581 10/26/93 REED
A	RELEASED PER ECR # U30372 03/11/93 REED
3	REVISE GOLD PLTG. PER ECR # U12055 10/18/91 AAB
2	REVISE TERM. PLTG. PER ECR # U11096 06/18/91 AAB
1	*X* RELEASE PER ECR # U10445 02/07/91 AAB

DIMENSIONS SHOWN (METRIC) INCH		▽ = 0		= 0		REVISE ONLY ON CAD SYSTEM	
UNLESS OTHERWISE SPECIFIED TOLERANCES: ANGULAR ± 1/2°							
3 PLACE ± .005		---		---		---	
2 PLACE ± .01		± 0.13		---		---	
1 PLACE ---		± 0.25		---		---	
DRAFT WHERE APPLICABLE MUST REMAIN WITHIN DIMENSIONS							
DRWG. BY: AAB	CHK'D. BY:	FILE NAME: 57859X1A	SCALE: 10: 1	MOLEX INCORPORATED		SHEET NO. 1 OF 1	DATE 02/07/91
APP'D. BY: MJM	SCALE: 10: 1	SEE CHART		SDA-7859-2A***N		DIV. DA	